

AMERICAN EPILEPSY SOCIETY

2012 Annual Meeting

4th Biennial North American Epilepsy Congress in collaboration with the ILAE, CLAE and ILAE

DATES Friday, November 30 – Tuesday, December 4, 2012

LOCATION San Diego Convention Center, San Diego, CA USA

The American Epilepsy Society is pleased to announce the 66th Annual Meeting being held in San Diego, California, USA, November 30 – December 4, 2012.

The American Epilepsy Society (AES) is one of 108 Chapters of the International League Against Epilepsy (ILAE). The AES belongs to a regional ILAE commission called the North American Commission (NAC) that consists of AES, the Canadian League and the Jamaican League Against Epilepsy. The ILAE Regions host biennial annual meetings and in 2012 the AES meeting becomes the ILAE North American Commission meeting.

The Annual Meeting of the American Epilepsy Society is the largest meeting and exhibition in the world, of those who share the common scientific and clinical interests of epilepsy and clinical neurophysiology. Each year 4,000+ attendees gather, who are dedicated to improving the quality of life for those afflicted with epilepsy. This meeting will be the top forum to examine common concerns and provide the opportunity to gain insight from leaders in the field of epilepsy.

Hotel and registration information available on the AES website

Mission Statement

The American Epilepsy Society promotes research, education and training for professionals dedicated to the prevention, treatment and cure of epilepsy.

Accreditation

The American Epilepsy Society is accredited by the Accreditation Council for Continuing Medical Education (ACCME) to offer continuing medical education for physicians.

Credit Designation

Physicians: The American Epilepsy Society designates this live activity for a maximum of 32.0 AMA PRA Category 1 Credits™. Physicians should claim only the credit commensurate with the extent of their participation in the activity.

International Credits

The American Medical Association has determined that non-U.S. licensed physicians who participate in this CME activity are eligible for AMA PRA Category 1 Credits™.

Important Dates

March 1	Abstract submission site opened
May	Hotel reservations open via the AES website
June 15	Abstract submission site closes at 11:59 p.m.(ET)
July	Annual Meeting Brochure available online Registration opens via the AES website
September 28	Membership renewal deadline
October 8	Group hotel reservations deadline
October 26	Registration discounts expire
November 5	Individual hotel reservations deadline
November 15	Pre-registration deadline
November 30	Registration opens on-site in San Diego, CA

Meeting Highlights

- Educational Symposia
- Case-based Annual Course
- Poster Sessions
- Platform Sessions
- Special Interest Group Meetings
- Skills Workshops
- Investigators' Workshops
- Scientific Exhibits
- Commercial Exhibits

Building for the Future

Even as we make progress in understanding, diagnosing, treating and preventing epilepsy, and even as we know there is more to be done, we are facing a new reality — funding sources that we once relied on are now no longer available. The American Epilepsy Society needs your financial support to continue the important work of research and treatment. In supporting the American Epilepsy Society, you are helping to close the treatment gap that extends the suffering of those with epilepsy. Your contribution means researchers and care providers will continue to get the training and develop the skills necessary to help answer the tough questions epilepsy poses.

Philanthropic support for the work of AES is critical to maintaining our position as leaders in research, treatment, training and professional development. One hundred percent of funds raised by AES go to research, training and new programs. Make your gift today — www.AESNET.org/go/donation.

Professional Connection — Are You Connected?

You can use Professional Connection to connect with your colleagues, build your network, discuss current issues, volunteer for committees, participate in committee and SIG discussion groups, share documents and more! To get started go to <http://connect.AESNET.org>, click login, enter your AES member ID number and password, then click go.

QR Code Featuring Annual Meeting Updates



Follow Us on:



PRELIMINARY SCHEDULE

as of 4.12.2012

FRIDAY

November 30

8:30 a.m.	Epilepsy Specialist Symposium: Algorithms in the Diagnosis and Treatment of Epilepsy 8:30 a.m. - 11:30 a.m.		
11:30 a.m.			
12:30 p.m.	Annual Fundamentals of Epilepsy Symposium: Optimal Use of the Newest AEDs and Generics 12:30 p.m. - 3:00 p.m.	Professional Development in AES: A Program for Junior Members and Those in Transition 1:30 p.m. - 3:00 p.m.	Special Interest Group Meetings 1:30 p.m. - 3:00 p.m.
3:00 p.m.			
3:30 p.m.	Spanish Symposium: Extratemporal Epilepsies 3:30 p.m. - 6:00 p.m.	Hoyer Lecture 4:15 p.m. - 5:45 p.m.	
4:15 p.m.			
5:45 p.m.			Symposia Break 5:45 p.m. - 6:30 p.m.
6:00 p.m.			
6:30 p.m.	Hot Topics Symposium: Modulators of Epilepsy 6:30 p.m. - 9:00 p.m.		Special Interest Group Meetings 6:30 p.m. - 8:00 p.m.
8:00 p.m.			
9:00 p.m.			

SATURDAY

December 1

7:00 a.m.	Special Interest Group Meetings 7:00 a.m. - 8:30 a.m.			
8:30 a.m.	Presidential Symposium: IOM Report 2012: Epilepsy Across the Spectrum: Promoting Health and Understanding 8:30 a.m. - 11:30 a.m.			
11:30 a.m.				
11:45 a.m.	Poster Session 1 11:45 a.m. - 6:00 p.m.	Professionals in Epilepsy Care Symposium: Transitioning from Adolescent to Adult Epilepsy Care: Current Issues in Clinical Practice 2:00 p.m. - 4:30 p.m.	Translational Research Symposium: Epilepsy Benchmarks: Major Advances 2:00 p.m. - 4:30 p.m.	Exhibit Hall 11:45 a.m. - 6:00 p.m.
2:00 p.m.				
2:30 p.m.				
4:30 p.m.			Clinical and Basic Science Keynotes 2:00 p.m. - 2:30 p.m.	
6:00 p.m.				(Reception: 4:30 p.m. - 6:00 p.m.)
6:15 p.m.		Special Interest Group Meetings 6:15 p.m. - 7:45 p.m.	Investigators' Workshops 6:15 p.m. - 8:15 p.m.	Antiepileptic Therapy Symposium: Management of Refractory Status Epilepticus 6:15 p.m. - 8:45 p.m.
7:45 p.m.				
8:15 p.m.				
8:45 p.m.				

SUNDAY

December 2

8:00 a.m.	Scientific Exhibits 8:00 a.m. - 5:00 p.m.	Poster Session 2 8:00 a.m. - 6:00 p.m.	Annual Course: Managing Common Complex Symptomatic Epilepsies: Tumors and Trauma 8:45 a.m. - 5:15 p.m.	Investigators' Workshops 8:45 a.m. - 5:45 p.m.	Exhibit Hall 11:00 a.m. - 6:00 p.m.
8:45 a.m.					
11:00 a.m.					
5:00 p.m.				IW Posters / Boxed Lunch: Noon - 2:00 p.m.	
5:15 p.m.					
5:45 p.m.					
6:00 p.m.					
7:30 p.m.	Special Interest Group Meetings 7:30 p.m. - 9:00 p.m.				
8:00 p.m.		Social Networking Groups 8:00 p.m. - 10:00 p.m.			
9:00 p.m.					
10:00 p.m.					

PRELIMINARY SCHEDULE

as of 4.12.2012

MONDAY

December 3

7:00 a.m.	Special Interest Group Meetings 7:00 a.m. - 8:30 a.m.				
8:00 a.m.		Poster Session 3 8:00 a.m. - 3:30 p.m.	Scientific Exhibits 8:00 a.m. - 5:00 p.m.		
8:30 a.m.					
9:00 a.m.	Special Interest Group Meetings 9:00 a.m. - 10:30 a.m.			Merritt-Putnam Symposium: From Molecules to Cells, Networks and Seizures: How Does a Gene Cause Epilepsy? 9:00 a.m. - Noon	
10:30 a.m.					
11:00 a.m.	Exhibit Hall 11:00 a.m. - 4:00 p.m.				
Noon					
2:15 p.m.				Lennox & Lombroso Lecture 2:15 p.m. - 3:00 p.m.	
3:00 p.m.					
3:30 p.m.					
3:45 p.m.					
4:00 p.m.	Pediatric Epilepsy Highlights 4:00 p.m. - 5:30 p.m.	Platform Sessions: 3 Concurrent Sessions 4:00 p.m. - 6:00 p.m.		Investigators' Workshop 3:45 p.m. - 5:15 p.m.	Special Interest Group Meetings 3:45 p.m. - 5:15 p.m.
5:00 p.m.					
5:15 p.m.					
5:30 p.m.					
5:45 p.m.			Symposia Break 5:45 p.m. - 6:30 p.m.		
6:00 p.m.					
6:30 p.m.	Pediatric State of the Art Symposium: Prolonged Febrile Seizures and TLE: New Answers and New Questions 6:30 p.m. - 9:00 p.m.				
9:00 p.m.					

TUESDAY

December 4

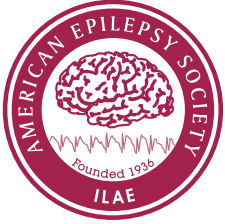
7:00 a.m.	Special Interest Group Meetings 7:00 a.m. - 8:30 a.m.	
8:30 a.m.	Scientific Symposium: Stereotactic Electroencephalography (sEEG) in the Pre-surgical Investigation of Refractory Focal Epilepsy 8:30 a.m. - 10:00 a.m.	North American Commission Symposium: Epilepsy Classification: Hot Controversies in 2012 8:30 a.m. - 10:00 a.m.
10:00 a.m.	Skills Workshops (3 Concurrent) 10:00 a.m. - 11:30 a.m.	Special Interest Group Meetings 10:15 a.m. - 11:45 a.m.
10:15 a.m.		
11:30 a.m.		
11:45 a.m.	Skills Workshops (3 Concurrent) 11:45 a.m. - 1:15 p.m.	
1:15 p.m.		

Color Key

Special Interest Groups	Break	Education Program
Exhibit Hall	Scientific Exhibits	Investigators' Workshops
Poster Sessions	Other	

American Epilepsy Society
342 North Main Street
West Hartford, CT 06117-2507

Non-Profit Org.
U.S. POSTAGE
PAID
Hartford, CT
Permit No. 946



www.AESNET.org

PRELIMINARY BROCHURE

SAN DIEGO, CA
San Diego Convention Center
Friday, November 30 – Tuesday, December 4

AMERICAN EPILEPSY SOCIETY
2012 Annual Meeting
4th Biennial North American Epilepsy Congress
in collaboration with the ILAE, CLAE and JLAE

4th Biennial North
American Epilepsy
Congress in
collaboration with
the ILAE, CLAE
and JLAE.

Committed to
Research, &
Education &
Training

**2012 ANNUAL
MEETING**
**AMERICAN
EPILEPSY
SOCIETY**
November 30 - December 4
SAN DIEGO, CA

